

Transferring the SV-1 from Blackbox to Eurorack case

1. Remove the 4 black screw from the corners of the SV-1 front panel (take care not to strip the heads)
2. Lift the bottom edge of the module up and slide it out at an angle, so the power switch can clear the case
3. Flip over the module on to a padded surface and locate the small power board on the back.
4. Remove the single black screw from the power board and carefully pull it straight off. This will reveal the 10-pin Eurorack power connector (Figure 1).
5. The hexagonal metal spacer on the back of the module should not interfere with remounting, so you can leave it attached (Figure 2).
6. Attach a standard Eurorack 10-to-16 pin power cable to the connector so that the red stripe (-12V) faces down (Figure 3). These can be purchased in our web shop. pittsburghmodular.com/store/
7. Plug the 16 pin side of the cable into a power connector in your case and screw in the module

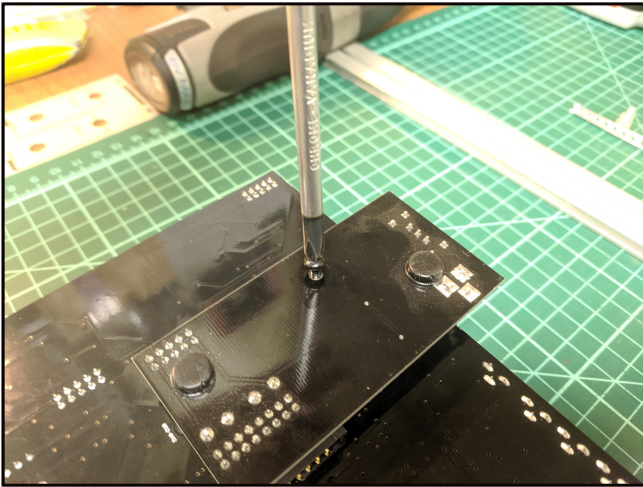


Figure 1

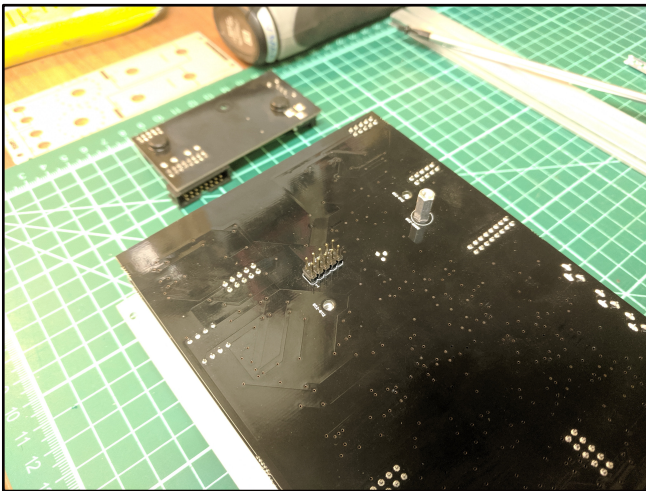


Figure 2

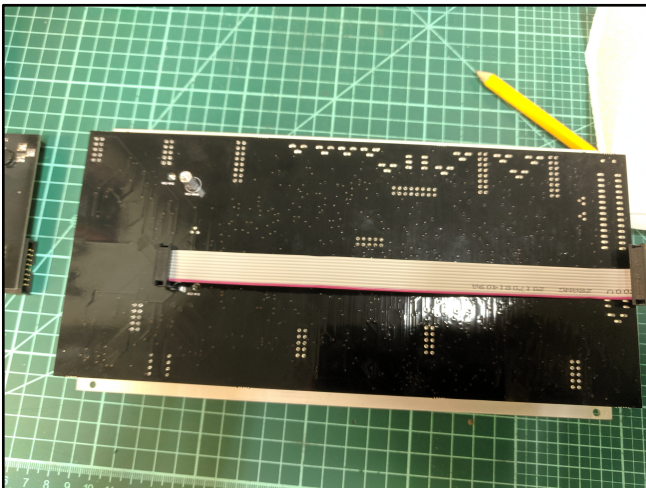


Figure 3